

# KILNINFORD NEWS

---

Issue 34

September, 2009

---

## **ARDUAINE GARDEN SUPPORT GROUP**

Some 30 people met at Kilmelford Village Hall on the evening of Wednesday 9th September to hear what the Support Group (formerly known as the Arduaine Garden Action Group), had already achieved, and what they aim to achieve, in respect of keeping Arduaine Garden open for the foreseeable future.

This was the culmination of several months' work by the Group since their first update at the community council meeting in April of this year, and it showed just how far things have progressed, and how successful they had been, since then.

The Steering Committee of the Group, led by Calum Ross, initially thanked the attendees, who included Councillors Dougie Philand and Elaine Robertson, Mike McKenzie representing Jim Mather MSP and Robert Ferguson, who represented the National Trust of Scotland itself.

A brief overview was provided by Rick Potter of the Group's actions to date, explaining how through various means the Garden had gained a year's reprieve, and that the Group, in collaboration with the NTS had already been working on a campaign to make this reprieve permanent.

Karen McCross then explained in more detail the three arms of the campaign – Commercial, which will include the NTS working in association with the Loch Melfort Hotel amongst others to offer a better and broader experience for visitors; Fundraising to allow the NTS to generate an Endowment Fund to cushion the deficit between income and expenditure; and AGSG actions, specific activities and events to raise awareness of the garden and encourage its broader use.

Rick Potter then went on to detail some of the many activities the Group intends to do to achieve this awareness, which will include increased publicity and regular media coverage. However he also indicated that, although there are free options available, others do cost money and that the Group needed funds to achieve this. It is therefore proposed to invite all those interested in supporting the garden to become members of the Arduaine Garden Support Group, for a small annual membership fee, in order to generate the relevant funds.

Coffee and biscuits were taken, and this allowed for a lot of further informal discussions before the meeting reconvened.

Having asked the attendees to read the proposed constitution during the break, in the penultimate session Calum talked through the need for a formal constitution and the key points of the proposed document including the proposals for membership/benefits and a steering committee to run the affairs of the group.

Throughout the meeting there was considerable interest from the floor, and a large number of relevant questions and pertinent ideas were aired.

In summary, all relevant parties, National Trust for Scotland, Loch Melfort Hotel and the Arduaine Garden Support Group are equally committed to saving the garden for the long-term and the role of the AGSG is critical in the overall plan as visitor numbers need to be increased significantly. At the summing up it was clear from the audience's response that they agreed in principle with the aims and ambitions of the Group – indeed some signed up for membership there and then.

Calum finished the meeting with a further appeal for as many people as possible to become members of the group (a membership application form is enclosed) and indeed for volunteers to join the Steering Committee. Finally, Calum thanked all for attending and for their contributions to the discussions. A first meeting of the Group's membership would be convened within three months to formalise the Committee, constitution and direction of the Group.

## WHAT'S ON IN AND AROUND KILMELFORD AND KILNINVER

**Wednesday, 23<sup>rd</sup> September – Licketyspit Theatre “The Hare and the Tortoise”** in Craignish Village Hall at 6 p.m.

Details and booking Tel: 01852 500746 or cvh.arts@btconnect.com

**Friday, 25<sup>th</sup> September - Coffee Morning (in participation with the World's Biggest Coffee Morning in aid of Macmillan Cancer Support).** Come and join friends and neighbours from 10.30a.m.– 1p.m. at Kilmelford Village Hall. Entry £2.

Contacts: Jean Bowman Tel: 01852 200380, Caroline Gillanders Tel: 01852 200388 Jennie Campbell-Gibson 01852 200263 and Jane Rentoul 01852 200331

**Wednesday, 7<sup>th</sup> October - Parish Lunch and Produce Sale** from 12 noon till 2.30 p.m. in Kilmelford Village Hall in aid of church funds.

Everyone welcome. A chance to meet up with friends and neighbours, folk working locally and visitors. Come and enjoy a good bowlful of home made soup, well filled rolls, tea and coffee, shortbread and baking. There will be a fine selection of plants for autumn gardening and plenty of home produce and baking to stock up for winter. The newly up-dated Local Directory will be on sale and the £1 charge per copy will be donated to the church for any bought on the day.

The Kirk Session very much appreciate the support that has been given to the church during the year and hope you can come on the 7<sup>th</sup> of October when we look forwards to welcoming you.

Donations would be very much appreciated. Baking for sale or for the teas can be left with Dorothy Carmichael beforehand and donations for other stalls can be left with the relevant stallholder by prior arrangement. Alternatively, the hall will be open to receive donations from 10 a.m. on the day.

Contacts:	Lunches	Georgina Dalton	01866 844212
	Baking	Dorothy Carmichael	01852 200374
	Plants	Elizabeth Asbury	01852 200377
	Bottle Stall	Dorothy and Malcolm Bark	01852 200370
	Produce	Jenny Moody	01852 200222
	Raffle	Jane Rentoul	01852 200331
	Handicrafts	Isabel Smith	01852 200537

**Friday, 6<sup>th</sup> November – Coffee Morning** from 10.30 a.m. till 12 noon in Kilmelford Village Hall in aid of parish funds and the village hall.

Offers of baking greatly appreciated.

Contact: Melissa Oatts Tel: 01852 200314.

**Wednesday, 18<sup>th</sup> November – An Evening of Traditional Songs of Scotland** in Kilmelford Church at 7.30 p.m.

Introducing the songs, and accompanying herself on guitar, Alison Bardgett has very kindly offered to give a recital in aid of the Church Restoration Fund. Fruit punch and shortbread will be served during a short interval. Donations to the appeal in lieu of tickets. All welcome.

**Saturday, 21<sup>st</sup> November – Pot-Luck Curry Supper and Quiz night** in Kilmelford Village Hall in aid of Village Hall Funds. 7.30 p.m. for 8.00 p.m. start. Family teams welcome.

**Sunday, 22<sup>nd</sup> November – Recital by Tony Cox**, violinist, in Craignish Village Hall at 3 p.m.

Details and booking: Tel: 01852 500746 E-mail: cvh.arts@btconnect.com

**Saturday, 28<sup>th</sup> November – St Andrews Night Dinner Dance** from 7.30 p.m. at the Galley of Lorn. Live Music by Archie John McVicar. Tickets will be on sale at Ardfern Village Shop and Kilmelford Village Shop.

Contact: Dawn Stewart Tel: 01852 500291

**Friday, 4<sup>th</sup> December – Coffee Morning** from 10.30 a.m. till 12 noon in Kilmelford Village Hall in aid of parish funds and the village hall. Offers of baking greatly appreciated.

Contact: Melissa Oatts Tel: 01852 200314

**Sunday, 6<sup>th</sup> December – Craignish Christmas Fare.** Fine food and gifts for Christmas. To book a table, contact Norma Kirk Tel: 01852 500368 E-mail: [normakirk.btinternet@com](mailto:normakirk.btinternet@com)

**Friday, 22<sup>nd</sup> January – Traditional Burns' Supper** in Kilmelford Village Hall in aid of the Church Restoration Fund.

## **ART GROUP**

The group meets informally **weekly on Thursdays** from 2 p.m. – 4.30 p.m. in the small hall in Kilmelford. There is no tutor at present so fees are just £1.50 per session to cover the hire of the hall. All welcome.

Contact: Agnes McColl (Tel: 01852 200365)

## **COUNTRY DANCING**

Scottish Country Dancing will again take place most Thursday evenings at 8 p.m. in Kilmelford Village Hall starting on the 1<sup>st</sup> of October. New faces are always welcome at any time. However, it's better to start at the beginning of the season, if possible, so why not come along on the 1<sup>st</sup> of October.

Contact: Toni Mitchell Tel: 01852 316151 E-mail: [toni@themitchells.co.uk](mailto:toni@themitchells.co.uk)

**EMBROIDERY WORKSHOPS** – the weekly **Wednesday** morning workshops take place in Kilmelford Village Hall from 10 a.m. till 12 noon. £2 per person per morning.

Contacts: Dorothy Carmichael (Tel: 01852 200374) Toni Mitchell (Tel: 01852 316151)

## **KILMELFORD AND KILNINVER SUMMER FESTIVAL**

Thank you to everyone who braved the elements on Sunday, 23<sup>rd</sup> August to attend the Summer Festival. Also, thank you to all who put in entries and to the Mums who encouraged their children to enter.

## PRIZEWINNERS

Dalton Trophy	1 <sup>st</sup> Antoinette Mitchell	2 <sup>nd</sup> Jenny Moody
B P Trophy	1 <sup>st</sup> Antoinette Mitchell	2 <sup>nd</sup> Dorothy Bark
Melfort Farm Trophy	1 <sup>st</sup> Georgina Dalton	2 <sup>nd</sup> Malcolm Bark
Cuilfail Hotel Trophy	1 <sup>st</sup> Georgina Dalton	2 <sup>nd</sup> Jenny Moody
Arduaine Craft Trophy	1 <sup>st</sup> Antoinette Mitchell	2 <sup>nd</sup> Willie Wilson
Fish Farm Trophy	1 <sup>st</sup> Jenny Moody	2 <sup>nd</sup> Antoinette Mitchell
Melfort Hotel Trophy	1 <sup>st</sup> Kirsty McIntyre	2 <sup>nd</sup> Sarah McIntyre
Melfort Club Trophy	1 <sup>st</sup> Madeleine Roberts	2 <sup>nd</sup> Sophie Campbell
Melfort Pier Trophy	1 <sup>st</sup> Douglas Campbell	2 <sup>nd</sup> Tami Smith
Kilchoan Cup	1 <sup>st</sup> Antoinette Mitchell	2 <sup>nd</sup> Jenny Moody



**A BIG THANK YOU** to Sheena Hammick for planting and tending the lovely tubs of flowers at either end of Kilmelford. They provide a welcoming splash of colour.

## **KILMELFORD AND KILNINVER COMMUNITY ASSOCIATION**

Chair	Toni Mitchell
Treasurer	Fergus Gillanders
Secretary	Diane Scaife
Bookings	Anne Saunders
Committee members	Ellen Coyle, Lucy Files, Matthew Anderson and Christine Roberts

### **MINUTES**

**Committee meeting** held on Tuesday 14<sup>th</sup> July 2009 at Kilmelford and Kilninver Village Hall

Committee members present: T.Mitchell (Chair), F.Gillanders (Treasurer), D.Scaife (Secretary), E.Coyle,  
Also present: C. Gibson (Caretaker)

#### **1) APOLOGIES**

M. Anderson, L. Files, C. Roberts.

#### **2) MINUTES OF THE LAST MEETING**

These were approved as a true record.

#### **3) MATTERS ARISING**

- a) The certificate from Colin McNiven for the electrical work has not yet been received. FG is to contact him.
- b) The replacement bulbs for the main hall heaters have arrived.
- c) The damaged Gents' cloakroom door needs to be replaced. CG is to find out the price of a new door.
- d) No further information has been received on the possible Italian Evening that Elizabeth Asbury kindly offered to organise.
- e) CR is working on the setting up of the proposed Treasure Hunt.
- f) Philip Coyle has generously offered to act as MC at the Hogmanay Party.
- g) DS is to E mail the committee meeting minutes to the Kilmelford website.
- h) The electrical inspection of the Hall premises is to be arranged shortly.
- i) A faulty tap in the kitchen requires attention.

#### **4) CARETAKER'S REPORT**

- a) CG has strimmed the bank and surrounds and applied weed-killer.
- b) CG reported that the re-cycling bins are often full at this time of year and items for disposal are sometimes deposited outside the containers. It might be preferable to have the bins re-located to the car-park opposite the Hall. The Community Council may be able to discuss this.

#### **5) TREASURER'S REPORT**

- a) The bank balance in the main account stands at £2629. The 100 Club account stands at £594 and has 85 members at present.
- b) The money owed has been received from N Power. The Direct Debit to Scottish Power has been reduced to £57.00 per month. FG is to request a refund for the credit of £823 that is owed to us.

#### **6) FUNDRAISING**

- a) The use of the Hall by Theatre Companies to stage their productions raises some funds. Future productions could possibly be encouraged; TM is to investigate.

b) The forthcoming Summer Festival is expected to raise some funds for the Hall.

## 7) ENERGY AUDIT

An Energy Audit and Renewable Energy Options Appraisal was carried out on the Hall premises on behalf of Community Energy Scotland. Copies of the report were distributed to the committee by TM. The Hall may be able to apply for funding for improved insulation and heating if some form of renewable energy system is installed. Solar energy panels to supplement heating and hot water, and air exchange heat pumps were among the issues raised in the report. Various options for insulation were also detailed. A few simple measures, such as improved lagging of hot water pipes, a draught excluder on the back door and energy monitoring meters on the panel radiators could be readily implemented. Committee members are to study the document and report back to TM who will keep in touch with Community Energy Scotland regarding the next step in the application for funding.

## 8) RAERA WIND FARM

A feedback form for the proposed Raera Wind Farm was filled in.

## 9) AOB

DS advised that a Bar Licence can be applied for in the name of the committee only for fund-raising and charity events, not for functions, such as weddings, on behalf of a hirer of the Hall. FG mentioned that the selling of raffle tickets in place of direct payment for alcoholic drinks at private functions was acceptable to the Licensing Board. Seeking their permission first would be advisable.

## 10) DATE OF THE NEXT MEETING

Tuesday 8<sup>th</sup> September 2009 at 8.00pm

The meeting ended at 2110

## KILMELFORD AND KILNINVER VILLAGE HALL CHARGES

### SPORTS

Squash: 16 years and over £4 per hour  
Under 16 years, OAPs, students and unemployed £2 per hour  
Badminton: £3 per hour all categories  
Junior Football: £3 per hour  
Indoor Tennis: £3 per hour

### HIRE CHARGES

	<b>LESSER HALL</b>	<b>MAIN HALL</b>
Charity Fund Raisers	£1.50 per hour	£3 per hour
Social use other than charities	£3 per hour	£6 per hour
Commercial use	£6 per hour	£12 per hour

Above charges include kitchen power and use of equipment for light refreshment and drink preparation only.

Additional use of kitchen cooking facilities for preparation of hot food is £10 per event.

Evening Dances and Functions	<b>5 p.m. – 11 p.m. (1 a.m. for dances)</b>
Charity	£60/session Deposit: £20
Private	£60/session Deposit: £20
Commercial	£85/session Deposit: £50

N.B. Above charges include kitchen power and use of equipment for food and refreshment preparation.

### HIRE OF EQUIPMENT

Residents of Kilmelford, Kilninver and Arduaine may hire equipment, those resident outside the area by special arrangement.

Tables: £2 per day. Chairs: £1 per day. Prices of cutlery and crockery on request.

A full list of rates and availability can be obtained from the Hall Caretaker.

Hire is subject to a minimum charge of £10.

HEATING TOKENS FOR MAIN AND LESSER HALLS £1.50 each

MEMBERSHIP AND LOST KEYS £10 each

CARETAKING AND BOOKINGS FOR THE HALL

**Caretaker:-** Colin Gibson

**Bookings** should be made during business hours at the Kilmelford Village Stores (Tel: 01852 200271).

### UNDER 16s

**PLEASE NOTE:** owing to safety issues, no-one aged 16 or younger can be allowed into Kilmelford and Kilninver Village Hall without the supervision of an adult.

**After each use the Hall must be left clean and tidy. Failure to do this will lead to a further charge of £50.**

### **CHURCH OF SCOTLAND SERVICES**

Services are held every Sunday at 12 noon **alternately** in Kilmelford Parish Church and Kilninver Parish Church.

	Kilmelford	Kilninver
September	13 <sup>th</sup> , 27 <sup>th</sup>	6 <sup>th</sup> , 20 <sup>th</sup>
October	11 <sup>th</sup> (Harvest Thanksgiving*), 25 <sup>th</sup>	4 <sup>th</sup> , 18 <sup>th</sup>
November	8 <sup>th</sup> (Remembrance), 22 <sup>nd</sup>	1 <sup>st</sup> (Communion), 15 <sup>th</sup> , 29 <sup>th</sup> *
December	6 <sup>th</sup> , 20 <sup>th</sup> (Gift Sunday)	13 <sup>th</sup> , 27 <sup>th</sup>

\* Sunday, 11<sup>th</sup> October – Harvest Thanksgiving in Kilmelford Church - a celebration for all ages with Rev Walter Ritchie. On Saturday, 10<sup>th</sup> October, there will be a get-together at 2 p.m. to decorate the church and to enjoy music, story telling, creative fun and refreshments.

\* Sunday, 29<sup>th</sup> November – joint service with Kilbrandon and Kilchattan

In the December issue of the Newsletter there will be more details of a Christmas Celebration which will take place in the Village Hall for families and all ages to enjoy and participate in with a soup and sandwich lunch afterwards.

Notices for all Christmas Services will be in the December newsletter and will be posted on the notice board in the Village Shop in Kilmelford.

**Please note:**

Services are held every Sunday in Craignish Parish Church in Ardfern at 10.30 a.m.

**SCOTTISH EPISCOPAL CHURCH SERVICES - St John's Cathedral, George Street Oban.**

Sunday            8 a.m. Holy Communion  
                      10.15 a.m. Sung Eucharist (Fourth Sunday – Choral Matins)  
Wednesday    11 a.m. Holy Communion

**CATHOLIC CHURCH SERVICES - St Columba's Cathedral, Oban.**

Saturday        7 p.m. Vigil Mass  
Sunday         10.30 a.m. Sunday Mass

**ALASTAIR'S FAREWELL PARTY ON 15<sup>th</sup> JUNE, 2009**

The Kilmelford and District Pipe band, ably lead by Jim and Fergus, heartily piped Alastair and Christine and Kenny into a packed Kilmelford Village Hall. Rattling the last shuttlecocks down from the rafters, the rousing hand clap and cheers from the assembled company of friends and colleagues from near and far, welcomed them in.

At the far end of the hall, a buffet supper was temptingly laid out with a mouth watering selection of savoury dishes to be replaced later by an array of "good for you" puddings. Everyone had contributed their "best at making" and somehow not all had chosen to make the same dish. The spread was overseen by Chris and several young helpers from the villages. Ishbel stood by the door to welcome folk and Hamish and his handymen offered refreshment from the drinks table.

Every single table and chair was used, and even the playgroup seats were needed. Rhona's lovely flower arrangements brightened the hall. Martin managed to keep order as MC and introduced musical entertainment and songs from Winnie, Fiona, Sandy and Ellen and Philip.

There was a reluctance to begin the serious side to the evening. Douglas voiced the thoughts of the three parishes in his appreciation of Alastair's ministry, his care and compassion. The presentation to Alastair of a fine painting of Kilmelford Church and the Manse, by Rory Campbell-Gibson, along with a wallet of "pocket money" for his own choosing, marked the love and friendship which has grown over the five years. Christine was presented with a basket of flowers and a selection of Evelyn and Crabtree treats. Alastair's response was a heartfelt thanks to the communities for their love, support and trust in him during his stay.

A very big thank you to everyone who helped, and who came and enjoyed a very happy and memorable evening for the MacLachlan family and to wish Alastair and Christine all the very best in his retirement.

Georgina Dalton



## MUSIC NIGHTS IN KILMELFORD CHURCH

The music nights took place again this year each Wednesday in August and the first Wednesday in September. They were very well attended and there was a rich mix of talent, bagpipes, accordions, guitars, flutes, fiddle, singers, poetry readers and storytellers. Thanks to everyone who came along and, to those who provided the entertainment, a very big thank you.

Jim Robb

## LETTER FROM THE INTERIM MODERATOR OF THE PARISH CHURCH

Dear Friends

For some time there was a concern about the small number of people offering themselves as candidate for the ministry of the Church. We were told that without more ministers, parishes would have to be united or linked. The forebodings have become facts and many parishes, like our own, have become part of multiple linkages.

Do not, however, be despondent. It may well be that this will work out in the very best interests of the Church. When I was a boy, the minister effectively was the Church. He ran almost everything and many of the talents that existed in the congregation were rarely used. That sort of ministry was never God's plan for His Church.

In the passage from Acts 6, that I shared in Church recently, the early Christians soon realised that 'ministry' had to be shared by all. No one person had all the gifts. The congregation chose seven of their members to undertake the work of caring for the needy. It was as they shared their varying abilities, that the Church grew. There was an amazing result in this decision. Two of the men chosen to organise the work of sharing the food and money with the poor soon discovered other talents in their own lives.

**Stephen** did his work with such grace and power that even the non Christians started to take note. They were jealous of his power and the curious result of his consequent murder was that Paul heard the good news about Jesus, and through Paul the gospel message spread all over Asia.

**Philip** was quite different. In distributing the food and money to the poorer members of the congregation, I wonder if he discovered an ability to talk to people on a personal basis. "One to one", as we say. This eventually resulted in Philip sitting in a chariot with an Ethiopian official and explaining the meaning of the Christian message to him. The man became a Christian and the gospel spread as far as Ethiopia.

The individual tasks that we do for the God's Church, may seem to be small, but when we do them in Jesus' name and in the power of the Holy Spirit, the results can have a huge impact upon the whole community.

I am looking forward to working with you at this time. Please do not hesitate to contact me, if there is anything I can do for you.

May God bless you all.

Walter M. Ritchie  
Hazel Cottage, Kilmartin, Argyll.

## **NOMINATIONS COMMITTEE**

As many of you will recall, in April this year our three linked congregations elected a Nominations Committee, with the task of finding a new Minister following Alastair's retiral. There are eleven of us on the Committee, with Walter Ritchie, our Interim Moderator, also attending as a much-needed advisor.

The Committee's main job so far has been to draw up a Parish Profile, giving prospective candidates the information which they will need about the three congregations. We have just sent copies to all the ministers who have just completed their probationary years and are starting to look for their first charges. We are also placing copies in our various church buildings - keep an eye out for them.

We have also placed an advert in the September issue of Life and Work.

There is a great deal of work still lying ahead of the Committee, not least working out how we will go and listen to potential candidates, and preparing for interviewing them. The whole process could take quite some time - there are, after all, a large number of unfilled vacancies in the Church of Scotland. However, we have already two or three informal inquiries, which is encouraging!

Naturally, a lot of what the Committee is doing will have to remain confidential for the moment, but we will keep you all informed of progress. In the meantime, please keep praying for all of us on the Committee, and for God to call the right woman or man to be our next minister as quickly as possible!

Martin Waddell  
Convener, Nominations Committee

## **CONGRATULATIONS**

To Neil and Claire Campbell on the birth of their daughter, Jennifer Mary, on the 1<sup>st</sup> of May, a sister for Andrew.

To Robbie and Jenny Love on the birth of their second son, Max Douglas, on the 12th of June, a brother for Sam.

To Mellony (né Carruthers) and Ian McTavish on their wedding in Hunter Valley, Australia on the 9<sup>th</sup> of May, 2009 followed by celebrations in Kilmelford Village Hall on the 6<sup>th</sup> of June when they returned to Scotland.

To Joanne (né Bentley) and Bobby Campbell on their wedding. The ceremony and celebrations were held at Clachan Farm, Kilninver on 18<sup>th</sup> July 2009.

## **OBITUARY**

### **Lindesay Henry Robertson (24 August, 1927 – 23 June, 2009) – Minister, Engineer, Community Development Worker**

Lindesay Robertson was born in New Zealand on 24<sup>th</sup> August, 1927. The family returned to Bragleenmore, Kilninver, in 1930.

After joining the army in 1945, Lindesay gained a Cambridge engineering degree and an athletic Blue. In 1952 a serious climbing accident in which an ankle was shattered ended his mountaineering and his army career.

In 1954 he married Kate Cameron, a young doctor who had looked after him. After study for the ministry in Glasgow, he joined the Iona Community. In 1959 Lindesay and Kate went to Nyasaland (now Malawi), with their daughters, Fiona and Catherine. Based at Mulanje Mission, Lindesay visited villages by bicycle, preached in Nyanja, helped to set up village cooperatives and improve water supplies.

After eight years Lindesay decided to work with the Malawi Government, bringing piped water to villages from mountains such as Zomba and Mulanje. He inspired villagers to dig trenches for water pipes and ensured that Malawians were trained to carry on the work. After 18 years about two million Malawians had access to piped water. Lindesay's work was admired by governments and aid organisations and has been copied in many parts of the world.

In 1986, Lindesay and Kate returned to Bragleenmore. He became involved in his local Church at Kilninver and in the community. Water Aid enlisted him to do similar work in Ghana, much of which he did in the UK with occasional visits to Ghana. Again he made sure that Ghanaians were trained to continue the work. His work was recognised with the award of the MBE in 1971 and the President's Award for Outstanding Voluntary Contribution to Water Aid in 2002.

After several years of declining health, Lindesay died peacefully on 23<sup>rd</sup> June, 2009. He is survived by Kate and their daughters, Fiona and Catherine.

A modest man, he did good by self discipline, hard work, inspiring leadership and love of God and neighbour. This was one life that brought benefit literally to millions!

Stanley Hood

### **JOHN LOUGHRAY 1935 - 2009**

John and Kate came to Craig na Lynn in 1985 and from the start took a great interest in local activities. They always contributed very generously to any fundraising and, memorably, upon discovering that a raffle was not part of an event taking place later in the day to raise money for the new Kilmelford Hall and Kilmelford Church, John proceeded straightaway to gather together some terrific prizes, sell tickets and then work late into the evening helping to count up the day's takings. That was typical of his enthusiasm for, and love of, this part of Argyll.

His illness kept him away from his beloved holiday home over the last few years but to those who knew him here his ready smile and friendly manner will be fondly remembered for many years to come.

Jane Rentoul

# **KILNINVER AND KILMELFORD COMMUNITY COUNCIL**

## MINUTES OF MEETING HELD ON 14<sup>th</sup> APRIL, 2009

The meeting of the above Council was held on 14<sup>th</sup> April 2009 at the Village Hall.

**Present:** Robin Asbury, Chairman (RA), Robin Grey (RG), Nigel Mitchell (NM),  
Also in attendance were Cllr Duncan MacIntyre, Cllr Donald McDonald and Elaine Robertson.

**1. Apologies :** Lindsay Davies and Alasdair Oatts.

**2. Minutes of previous meeting:** The minutes of the meeting held on 10<sup>th</sup> Feb 2009 were taken as a true and accurate representation of that meeting. Proposed RG, Seconded NM.

**3. Matters Arising from previous meeting:**

- a). Roads issues - Thanks to Councillor MacDonald for helping to expedite pothole repairs. Also confirmation of completion of white lining at end of Loch Avich road.
- b). Speed limit in Kilmelford – No progress. Carried forward.
- c). Bus Shelter in Kilmelford – New timetable to be promulgated.
- d). Problem weeds in Scammadale - No progress. Councillor Robertson explained that there was no dedicated budget for this and eradication was a long term proposal.
- e). Sight lines in Arduaine – No further developments. Removed from agenda.
- f). War Memorial – No further progress. Carried forward.
- g). Community Council Review. – A decision on the way forward was expected towards the end of September. The Community Council has met and completed the Hexagon questionnaire. The value of the questionnaire was questioned and Councillor MacDonald stated that A&B Council had distanced itself from it and that the questions contained therein were all devised by Hexagon. Carried forward.
- h). Wheelie bins at Village Hall – Following Toni Mitchell's query at the last meeting as to why the Village Hall was required to pay a commercial rate to have these emptied, she now accepted that this was not negotiable and that the appropriate payment would need to be paid. Removed from agenda.
- i). Wind Farm at Raera – Following the planning application for temporary anemometry masts to be erected, a letter had been received from NPower inviting KKCC to attend a meeting with them on 29<sup>th</sup> April to hear their declaration of intentions and for local input. NM and RG (if available) agreed to attend and report back.

**4. Land around Kilmelford Village Hall:**

Councillor MacDonald explained that the new County Plan was not yet available for progress to be made. He indicated that it may be in place by June.

**5. Closure of Arduaine Gardens.**

RA stated that a small ad hoc committee had been formed on the basis that it was better to do something rather than just allow the Gardens to close and to investigate what was happening at present and the National Trust's (NT) intentions and reasons for the proposed closure. He gave details of what the

committee had been able to glean from various sources and the NT's financial position and funding in respect of the Gardens. It was emphasised that no decision had been made for the actual closure, but it remained a proposal (and that closure of other NT Gardens/Sites was also under consideration).

Following this statement there was a considerable discussion from the floor covering funding, improving methods of operating, improving publicity, joint ventures and sundry other possibilities.

It was agreed that the Gardens were a National asset, rather than parochial to Kilninver and Kilmelford and that every effort should be made to keep them open. That time was of the essence and that a petition should be progressed to obtain as many names as possible. That A&B Council should be involved and that the subject should be raised as an emergency item on the agenda of the next suitable executive meeting of A&B Council. That the Kilninford News would carry a flier in respect of the Petition, to promulgate information generally and to seek additional members of the Group.

## **6. Planning Applications:**

Two applications:

- a). For redevelopment of Farmhouse at end of Degnish Road – no objection.
- b). For a breakwater at the mussel farm in Loch Melfort – no objection.

## **7. Correspondence:**

None highlighted.

## **8. Any Other Business**

Easdale Medical Practice Members Participation Group is seeking a volunteer from Kilninver and Kilmelford. Names to NM.

## **Date of next meeting:**

The next meeting of Kilninver and Kilmelford Community Council will be held at 8pm on 9<sup>th</sup> June 2009 in Kilmelford Village Hall.

There being no further business the Chairman closed the meeting at 9.20 pm.

## **MINUTES OF MEETING HELD ON 9<sup>th</sup> JUNE, 2009**

The meeting of the above Council was held on Tuesday 9<sup>th</sup> of June 2009 at 8pm in the Village Hall.

**Present :** Robin Asbury(RA)Chairman, Robin Grey(RG), Lindsay Davies(LD) and Nigel Mitchell(NM). Also in attendance were Cllr Donald McDonald, Cllr Duncan McIntyre, and 8 members of the public.

**1.Apologies :** Alasdair Oatts(AO).

**2.Minutes of previous meeting :** The minutes of the meeting on the 14<sup>th</sup> of April were taken as being a true and accurate representation of that meeting. Prop. RG .2nd NM.

## **3. Matters arising :**

- a) Roads issues- Potholes filled and resurfacing done.
- b) Speed limit in Kilmelford - carried forward.
- c) Bus Shelter in Kilmelford - subcontractor no longer working for A&B council and frame out of alignment. Awaiting new contractor visiting. Timetable still out, to be dealt with.
- d) Problem weeds in Scammadale - Argyll wide problem. CC can get funding to tackle themselves. Cllr MacIntyre to forward info.

- e) War Memorial - workmen now finished in church without the work coming to fruition due to lack of delivery of lifting equipment. Cllr MacIntyre to pursue
- f) Community Council Review- Currently in Phase 2, NM, LD and RA have all been to meetings concerning this. Elections, due in October may be later. Comments due on Consultation document by 26<sup>th</sup> June 2009. CC could be, for this area minimum of 6, maximum of 10 Community Councillors. Suggestion that sub areas should be removed. Community Councillors to meet and put comments in by this date. Cllr MacIntyre added that September/October election was dependent on the document being agreed on.
- g) Proposed Wind Farm, Raera Forest- Anemometers now up. NM, RA and LD attended a meeting with Npower representative, Karen Fox. Public display to be in Kilmelford Village Hall in August on a Friday evening and Saturday morning with pictures of what the wind farm would look like from various directions. Five sound monitors being put in within the next few weeks.

**4. Land around Kilmelford Village Hall :** Awaiting Lorn plan to be approved in order to be forwarded. It is hoped that this will be in June.

**5. Arduaine Gardens :** Reprieve for 1 year. Another meeting has occurred with National Trust looking at marketing and management of an endowment of £500,000 over a 25 year period. The Arduaine group is now looking at how it can become a 'Friends of Arduaine Gardens' type group involving using a database to facilitate growth. Cllr MacIntyre added that the Area Committee wish to be supportive. Calum Ross is to meet with a representative of the Council looking at the future of the garden.

#### **6. Planning Applications :**

1. Oude bridge realignment - No issues. AO asking if construction of a bus lay-by could be considered at the time of construction.
2. Removal of condition 2 at Scarba, Arduaine. No issues.
3. Erection of managers house, Melfort Pier. Reapplication with disabled access. No issues.
4. Erection of 2 storey shed, greenhouse and decking at Loch Melfort Hotel. No issues.
5. Erection of 2 dwelling houses and redevelopment and barn. Lagganmore, Scammadale. No issues.
6. Erection of dwelling house, Lagganbeg, Scammadale. No issues. However the Community Council agreed with Mr. Ian MacIntyre's suggestion at recent Area meeting that a Scammadale based site meeting re long term vision re development would be useful.

#### **7. Correspondence :**

All on display. Highlighted the following

Invitation to 10 people, 10 experiences exhibition, CalMacFerry Terminal 22.05.09-17.05.09. RA attended. Planning (Scotland) Training. NM to attend.

Invitation to Oban High School, Jim Mather and Peter Bain, Headmaster re co-operative working. RA attended.

Care and Repair poster - to be displayed on notice boards.

Energy Assistance Package detailing grants available for home improvements.

Notification of 'Make the link with your sink' project re River Euchar shortlisted for Observer Ethical Award. Cllr MacDonald added he thought this came second.

Request from Oban Community Council asking for indication of training needs.

Press release re Oban High School Pipe band and fundraiser of piping/drumming up Ben Lora.

#### **8. Any Other Competent Business :**

1. RA raised the issue of new Planning Act. Training available in July. NM to attend
2. NM discussed Core Paths. NM has maps of where this will be within our area. The public are being invited to suggest where the paths should go. NM has several copies of the Consultative draft of this document including DVD for anyone who wishes to look at this.

### **Date of next meeting :**

The next meeting of Kilniver and Kilmelford Community Council will be held in the Kilmelford Village Hall on Tuesday 11<sup>th</sup> of August 2009.

There being no further business the Chairman closed the meeting at 9.05pm.

### **DRAFT MINUTES OF MEETING HELD ON 11<sup>th</sup> AUGUST, 2009**

The meeting of the above Council was held on Tuesday 11<sup>th</sup> August 2009 at 8pm in the Village Hall.

**Present:** Robin Asbury (RA) Chairman, Robin Grey (RG), Lindsay Davies (LD), Alasdair Oatts (AO) and Nigel Mitchell (NM).

Also in attendance were Cllr Neil MacKay, Cllr Duncan McIntyre, and 23 members of the public.

**1.Apologies:** Cllr Donald MacDonald, Cllr Elaine Robertson.

**2.Minutes of previous meeting:** The minutes of the meeting on the 9<sup>th</sup> of June 2009 were taken as being a true and accurate representation of that meeting. Proposed RG. Seconded NM.

### **3. Matters arising:**

- a) Speed limit in Kilmelford - No progress. Potential new opening to The Glebe site. RG stated this should be taken forward with the new opening in mind. Cllr McIntyre advised contact Stuart Millar. RA raised that maintaining the new exit may be desirable from bulk of traffic perspective, but drawback of proximity to Degnish Road end with current speed limit. AO confirmed this is 12 month only permission for this opening. Cllr MacIntyre added there may be need for streetlights. RG to pursue.
- b) Bus Shelter in Kilmelford - Roof still shattered, Cllr McIntyre stated awaiting new contractor to complete by end of this year and seat to be added. Timetable up to date.
- c) Problem weeds - Grants available for communities to tackle themselves.
- d) War Memorial - Cllr McIntyre confirmed this should be completed before Remembrance Day this year.
- e) 10 experiences expo - RA attended. Good exhibition.
- f) Core Paths - Julyon Britton can attend CC meeting if we so wish.
- g) Make link with your sink -query that this came first in the competition in which it was short-listed.

**4. Land around Kilmelford Village Hall:** Current situation, with support from all the Local Councillors this was passed with conditions, those being the ownership of the land designated for the Community development is legally passed to the Community. John Tilly has offered to donate 50% of cost of creating the recreational facilities plus £1000 per annum for the next 5 years for maintenance in total amounting to £12,500. This now goes to the PPSL meeting. With new planning laws in place some Local Councillors will be able to speak in support of our applications. Cllr MacIntyre will be supporting us at this meeting. After this meeting it will then go to Scottish Executive level. This would be later on in the year. Only outstanding issue at this point is confirming that the Community Council will not be financially responsible for moving of a power cable. Future CC will be at liberty to accept or not the offer of this land. Future of this whole project will likely involve volunteering from the community. Toni Mitchell asked if the cash amount involved would be sufficient. RA confirmed he thought it would. Having spoken to A&BC they indicated grass cutting of this scale would be approx at £40 a time, with no undertaking from them to take on this work. Cllr MacIntyre asked re any unforeseen situation that would put a burden on CC financially. RA confirmed that all foreseeable expenditures accounted for in the agreement. Agreement has not been signed yet and the CC would not be signing until they were happy we would not be burdened with any cost out with our capabilities to deal with. Ian Tegner asked re any timescale the Community would be held to. RA stated only timescale is that John Tilly will hand over ownership of land within 3 months. Cllr

MacIntyre indicated Taynuilt and Dalmally Community's began projects with assistance from the Council with the community then taking on the task.

**5. Arduaine Gardens:** Recent meeting, Arduaine Garden Action Group has changed their name to Arduaine Garden Support Group. There has been a substantial donation and the family providing this have joined the Support Group with the aim of raising more significant financial support, looking at the commercial and marketing aspect of the running of the garden and community involvement. Calum Ross will be liaising with the National Trust re developments. Meeting planned for the 9<sup>th</sup> of September in the Village Hall where the members of the Action Group stepping down and local people with an interest taking over with the intention of taking this forward. Database in existence from the campaign to keep the gardens open, the National Trust will take on the use of this to attempt to gain continued financial support. Cllr MacKay added that he would try and ascertain information regarding numbers of buses from cruise ship coming into Oban to see if that could be utilised. Ian Tegner asked the Chairman's opinion of the National Trust's commitment to the garden as he has had a disappointing response from his communications with them. RA suggested he too has had difficulty getting financial information from Office bearers from NT.

**6. Proposed Wind Farm, Raera Forest:** All members of community have been sent a brochure from Npower. CC members from Kilninver and Kilmelford and Seil met with Karen Fox, Development Officer. A visit to Beinn Glas wind farm happened on Monday of this week. There will be a meeting and public exhibition on 28<sup>th</sup>/29<sup>th</sup> of August, and another on the 8<sup>th</sup> of September in Seil Village Hall. NM updated re change in planning laws (for all planning issues not just this issue), which require 12-week pre-consultation forum. CC is a statutory consultee on major and national developments. On local developments once notified of any planning application CC have 28 days to state any objection. The PPSL meeting as stated above is the next step re major and national developments. Georgina Dalton asked re ability of community council to hold planning issues as per current situation. NM confirmed we must notify planning dept within 7 days there will be an objection coming and there is then a further 21 days to get that objection in. Cllr MacKay added the Planning Department would now be issuing neighbour notification of 20 metres. RA put forward that if a wind farm were built there could be benefits to a community. Claudia Albrecht told those present about the Fintry Development Project where the Community asked for a turbine erected for them and this has provided a substantial income for the community i.e. a 1/15<sup>th</sup> share of the wind farm went to the community. Across the community many people benefited from free insulation over and above the income. She suggested that Gordon Cowtan, who was involved in the negotiating for this would come and speak to use and Claudia could arrange this for us. RA invited any questions from the floor. Angus MacFadyen added the positive effect on the community re income being generated and spent locally. Georgina Dalton asked re confirmation of figures based on 30-35% efficiency.

**7. West Highland Housing Association Development, The Glebe:** Discussion re road already covered. 15 houses currently being built not allocated as yet, 4 for shared ownership, 11 for rental. On completion applications will be invited. Meeting in Village Hall, Thursday 13<sup>th</sup> of August 4-7pm. Georgina Dalton asked for confirmation as to whether or not permission was granted for 2 storeys or 1½ storey. RA to check.

**8. Community Council Review.** Elections still hoped for in October. KKCC have commented on draft documents with our main areas of concern being the democratic process. Number of councillors to be based on population, ours would be going from 6 – 10 but the quorum being reduced to 3. Issue of sub areas likely to be removed. If we were unable to provide numbers of Councillors then CC would be put in abeyance. Association of Argyll and Bute Community Councillors still inputting. Meeting tomorrow night with AABCC representative David Price, NM, RA and LD to attend.

**9. Community Engagement:** LD updated re Community Engagement meeting, CHORD waterfront developments, hospital update, CC Review and future of Community Engagement. Cllr McIntyre added about the Area Committee meeting now utilising free time to promote community engagement, difficulties being meetings held during day etc. He also added re update re licensing laws and implications for Village



Halls, Licensing Standards Officer. Cllr Neil Mackay can advise. Loch Awe rescue issue and implications for other waters/hill areas also discussed. Transerve will be completely re doing the road from the Corran Halls to Royal Hotel, then from the Columba Hotel back to Corran Halls. This should take 6-9 months.

#### **10. Planning Applications:**

1. Cuilfail Hotel, micro brewery-No issues.
2. MacLeods, temporary road at the Glebe- No issue.
3. Field shelter, Keepers cottage, Ardenstur -no issue.
4. Application 6 dwellings at Kames- changes from previous application, aspect of sewerage plant, existing road to be made up to adoptable standard, up to entrance to Plot 6. Issue raised from resident re road safety with increase number of vehicles compounded by fish farm access. Cllr McIntyre suggests issues highlighted to Roads department. Adoption of road would occur when completed to adoptable standard. All previous objections still apply. Cllr MacKay added all concerns can still be directed through CC. CC to write in objection based on previous objections of existing covenants, area of Regional Scenic Value, density, details of services and access. AO encouraged locals to write.
5. Angus MacFadyen asked re planned development in Scammadale. Specifics re where this is and on what basis of operational need ascertaining bearing in mind the few good quality agricultural fields. Cllr MacIntyre commented re survey completed 8-10 years ago but most applications on sites not recommended. AO will keep an eye on this and if necessary lodge objection.

**11. Correspondence:** All correspondence put on display. The following highlighted. Opportunity Kintyre-Enterprise Facilitation.

#### **12. Any Other Competent Business:**

NM to assume responsibility for planning applications from 1<sup>st</sup> of August 2009. AO to keep responsibility for those before that date.

Angus MacFadyen raised the issue re blocked public right of way in Raera forest. RA to speak to Hazel McCorkindale re specific location and will contact Scottish Woodland re dealing with.

Deirdre Campbell Gibson raised the issue of potholes on the Degnish Road.

RA raised the issue re running of the prospective community land/possible benefits of Wind Farm etc with relevance to the Community Company as proposed previously. RA indicated that this was a project for the next CC and for the local community to take part in volunteering. RA suggested being proactive in our approach to our community, he suggested perhaps 20 hours of volunteering, in the widest sense of the word, in our community per annum, for those between 16 and 65. This also relevant to the future of the Community Council and prospective members.

#### **13. Date of next meeting:**

The next meeting of Kilninver and Kilmelford Community Council will be held in the Kilmelford Village Hall on Tuesday 13<sup>th</sup> of October 2009 at 8pm.

There being no further business the Chairman closed the meeting at 10.23pm.

#### **RAERA WIND FARM**

It's not absolutely clear as to whether the Exhibitions/Consultations at Kilmelford and Seil fully comply with the new planning procedures. Anyone with doubts, concerns or objections should write directly to Npower at the address below by the 28<sup>th</sup> of September. When Npower submit their formal planning application, they must show that they have addressed these concerns. The address is:-

RWE Npower Renewables Ltd, North Range East Lodge, Mill Road, Stanley Mills, Stanley, Perthshire, PH1 4QE. E-mail: [raera@npower-renewables.com](mailto:raera@npower-renewables.com)

Robin Asbury  
Chairman, Kilmelford and Kilninver Community Council

## COMMUNITY COUNCIL

Chairman	Robin Asbury	Tel: 01852 200377
Treasurer	Robin Grey	Tel: 01852 200225
Planning Officer	Alasdair Oatts	Tel: 01852 200314
	Nigel Mitchell (from 1 <sup>st</sup> Aug, 2009)	Tel: 01852 316151
Secretary	Lindsay Davies	Tel: 01852 316154
	Nigel Mitchell	Tel: 01852 316151
Councillors:	Cllr Donald MacDonald	Tel: 01631 566066 <a href="mailto:donald.macdonald@argyll-bute.gov.uk">donald.macdonald@argyll-bute.gov.uk</a>
	Cllr Duncan MacIntyre	Tel: 01631 770218 <a href="mailto:duncan.macintyre@argyll-bute.gov.uk">duncan.macintyre@argyll-bute.gov.uk</a>

Copies of approved minutes and all relevant notices are displayed on the Community Council noticeboards in Kilninver (by the bus shelter) and in Kilmelford (by the Post Office). They can also be viewed on the local website [www.kilmelford.com](http://www.kilmelford.com)

### **COMMUNITY COUNCIL ELECTIONS ON 29<sup>th</sup> OCTOBER 2009**

Kilninver and Kilmelford Community Councillors complete their period of office after the Meeting on 13<sup>th</sup> October 2009.

Under new Regulations, the next Community Council will comprise a maximum of 10 people and a minimum of 5. If the minimum is not reached then we will simply not have a Community Council to look after our interests.

If more than 10 people submit a Nomination Form then there will be a formal election on 28<sup>th</sup> October but if only 5-10 people volunteer then they will take their place in the new Community Council provided they meet the regulations.

Nomination Forms are available from Lorn House, Albany Street, Oban, PA34 4AR but in addition Robin Asbury (200377) and Nigel Mitchell (316151) also have a few Forms available.

The Forms must be returned to Lorn House before 4pm on 24<sup>th</sup> September so time is short.

If you wish to volunteer or believe that someone else could contribute then now is the time to act.

Don't delay – Act today

Robin Asbury – Chairman , Kilninver and Kilmelford Community Council

## **KILNINVER PRIMARY SCHOOL**

### **DATES FOR YOUR DIARY**

25<sup>th</sup> September – Children entertaining at the McMillan Cancer Support Coffee Morning

5<sup>th</sup> October – P6 and P7 Cycling Proficiency Test

9<sup>th</sup> October – School closes

26<sup>th</sup> October – School re-opens

18<sup>th</sup> November – Inter schools swimming gala

19<sup>th</sup> November – School closed for in-service

20<sup>th</sup> November – School closed for in-service

22<sup>nd</sup> December – School closes

6<sup>th</sup> January – School re-opens

### **Forest schools**

The whole school will be taking part in Forest schools Project. This is a fabulous opportunity for our children to develop their self confidence, problem solving skills and independence .We will be using the woods at Raera Farm.

The children will set up camp, design and build their shelter, set up a camp fire, learn to identify flora and fauna in their local environment and how to sustain it for the future.

We will have the help and advice of three Forest Rangers who will lead the activities

**School website** [www.kiln inverprimary.com](http://www.kiln inverprimary.com)

You may also want to look at our online learning log, which gives an insight into what we do on a day to day basis in the classroom and playground at <http://kiln inver.primarypodcast.com/>

Hear us read, chat, sing and recite poetry on our podcasting site <http://kiln inver.edublogs.org/>

Berni McMillan

### **LORN AND OBAN REUSE INITIATIVE**

In Spring of 2008 an enthusiastic and informed group known as Mull Environmental Sensitive Solutions commissioned a feasibility study from Community Recycling Networks Scotland into the creation, operation and successful maintenance of an Oban and Lorn-wide furniture reuse project.

The CRNS feasibility study demonstrated a need for a furniture and white goods recycling project and consequently, in May of 2008, a steering group was formed, involving interested parties from key areas of the community. Argyll & Bute Council, increasingly proactive on environmental issues, granted the group £15,000.00 via the Council's Local Area Homelessness Team to put a Development Worker in post and begin to create the infrastructure of the project.

In November 2008, I took on the role of Development Worker for Lorn and Oban Reuse Initiative, coming from a background of working directly with homeless and vulnerable persons, many of whom experienced drug, alcohol, violence, financial and domestic abuse related problems. In my experience the homeless sector often has great difficulty in obtaining equality of access to furniture, white goods and home furnishings as, for the most part, these have to be obtained through a Community Care Grant, depleted income or Benefits. Often unemployment and the sometimes chaotic lifestyles of vulnerable homeless individuals can render furnishing a new tenancy an almost incomprehensible task. Although support agencies, many of whom now have partnership agreements with the newly constituted LORI Ltd., endeavour to provide their clients with budgeting support, a bare house is often a daunting prospect to someone who has never had to furnish a home before. LORI intends to offer a home furnishing service using quality items at affordable prices. The stock will also be available to those on low income and the general public, hopefully creating a financially self sustaining project by 2011.

For the moment, LORI has been successful in its funding bid to INCREASE and, all things being well, the Project will be a reality during the two year period sustained by the funding, although the funding to date is minimal. Our working partnership agreements with housing associations such as WHHA and ACHA, support agencies such as Blue Triangle, Quarriers, OASIS and Lorn Resource Centre, training agencies such as Community Education and Argyll Training and local private enterprise like SHANKS continue to grow and we are already established as a valuable social enterprise. LORI is a member of the Argyll & Bute Social Enterprise Network, Community Recycling Networks Scotland Furniture Reuse Network and the Charity Retailers Association. LORI will offer both full and part-time employment opportunities, volunteering opportunities and training on an equal opportunities basis and intends to diversify and add to its recycling remit in the very near future. We will work with the Bridges Scheme at Community Education to ensure that adult literacy issues do not exclude potential volunteers - if you want to volunteer and have difficulty with reading, writing or numeracy LORI will facilitate a training placement for you at Community Education. Through training partnerships, staff and volunteers will be able to access Health & Safety, Manual Handling and First Aid training; work placements through New Deal etc. will be offered valuable work experience.

Everything required for the installation of the Project has been purchased locally where possible, the only element purchased outside Oban and Lorn being the portacabins; LORI hopes to contribute significantly to local economic growth through employment, purchasing, return to work training and tailoring to budgets in a time of credit crunch. Future potentials include a bicycle recycling scheme which will see broken bicycles being used for spares and repair and completed cycles being sent to Kenya allowing children to cycle to school over many miles instead of walking, additional cycles will be on offer at more than affordable prices to those in financial hardship locally, a bio mass production facility producing 'green' fuel for sale and provision of a constant stream of recycled crafting materials to be used in community workshops set up by LORI and incorporating local artists and crafters. Our local employability Team are already prepped to receive quality hard woods from our furniture reuse work, all saved from landfill, to ensure adequate materials for their furniture projects which offer training and work placements to the long term unemployed. Our on site shop will sell these products, raising revenue for both LORI and the Employability Team. In addition, we would like to work towards powering the project using renewable energy setting a standard in green energy use for all recycling projects.

We also hope to take on end of line and slightly damaged stock from wholesalers such as Mathesons and Homebase, providing new items for sale at very reasonable prices. In addition we will have a selection of hand-crafted turned wood items made from olive wood, mahogany, beech etc., all of which has been saved from becoming waste.

Finally, with support from Scottish Churches Housing Action, I and some interested church members cross-denominationally, including Antoinette Mitchell from your local area formed a volunteer led group called New Start Oban. New Start is a working partner of LORI and aims to provide Starter Packs of household goods free of charge to homeless persons going into their first tenancies. These Packs will include every smaller item that will turn a house into a home from tea towels to toiletries and cutlery to crockery. As LORI will inevitable be offered many of these items, including bedlinen, curtains etc. we aim to contribute significantly to the work of NSO as well.

In short, we are bursting with ideas and we hope that the LORI recycling and reuse projects will ensure both equality and quantity of service provision, and opportunities, for many years to come. Donations of quality furniture, books, bric-a-brac, household items and electricals are more than welcome and we look forward to seeing you as a volunteer or shopper at our new reuse site at Moleigh Civic Amenity site. Either way you will be making a difference to all those in your community who cannot afford some of the things that others take for granted and providing an interesting and eclectic 'rummage' and reuse facility to those of us interested in both old and new at bargain prices.

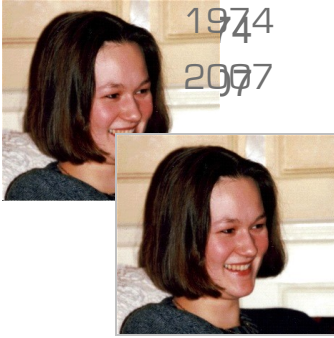
Elizabeth Mullen

Elizabeth can be contacted by Tel: 07767 876 633 or E-mail: [elizabethlori@btinternet.com](mailto:elizabethlori@btinternet.com)

In memory of  
of Alyson

1974

2007



In February 2005 aged 31 our daughter, Alyson, was diagnosed with stomach cancer and after a courageous battle she died at the end of May 2007. For the last four weeks of her life she was wonderfully cared for in Oban, Lorn and the Islands Hospital, although quite a large hospital by rural standards it still has that lovely cottage hospital feel to it.

About a week before she died she had to go for specialist treatment to Glasgow Royal where she had had her initial surgery. This is the downside to living in a beautiful rural area. She was taken by passenger transport! To the uninitiated this vehicle is rather like a minibus, which goes all round the various hospitals where patients have their appointments and you can be travelling for anything up to four hours each way. I have a friend who drives these vehicles and she tells me it's the saddest part of her job.

We set up a charity in Alyson's memory called "The Cherish Fund (Oban)". The aim of the fund is to buy a vehicle, which can be customised to transport terminally ill patients in comfort and dignity to wherever they need to go, be it Glasgow hospitals or just the Day Hospice to give their family respite. Through these pages, we would just like to say a **big thank you** to

everyone who has supported the Cherish Fund throughout the year; the latest donation of £300 from Susan, Sharon Laynie, Collette, Myra, Hugh and Jo from Jobcentreplus in Oban who did a treck up Ben Nevis and split their collection between MacMillan Cancer Support and the Cherish Fund which now stands at just under £9,000. We are now in the process of obtaining charitable status with OSCAR. We are hoping to have our inaugural meeting very soon and the first trustees are to be Jean Bowman, Caroline Gillanders, Ian Kerr, Dr. Lyon/Davies/Bennett (Taynuilt Medical Practice) and hopefully one of our local MacMillan nurses. If we can gain charitable status it means we can apply for funding i.e. "Lottery", and can claim "Gift Aid".

We have ideas for future fund-raising events including Santa and his Racing Reindeers, and a Tartan Ball possibly next February .

In the meantime, please keep coming to the Coffee Mornings held each Monday at The Shower of Herring. £2 for delicious home-baking, tea/coffee, a Book Café for all you book worms and even some retail therapy with Phoenix Charity Greetings Cards. It's a great way to cheer up your Monday morning. 10.30 until 12, all welcome.

For more information contact Jean 01852 200345 or Caroline 200388.

**USEFUL INFORMATION**

## MOBILE BANKING SERVICE

The mobile bank visits the area every Wednesday as follows:-

Galley of Lorn car park, Ardfern	11.15 a.m. – 12 noon
Craobh Haven Marina	12.15 p.m. – 12.45 p.m.
Cuilfail Hotel, Kilmelford	2 p.m. – 2.15 p.m.

## MOBILE LIBRARY

The mobile library service is provided on a Wednesday every four weeks and will be in the area on the 23<sup>rd</sup> of September, the 21<sup>st</sup> of October, the 18<sup>th</sup> of November and the 16<sup>th</sup> of December. Anyone wanting the driver, Neil McIntyre, to stop at or close to their house should contact him via the library in Oban (Tel: 01631 571444).

All times in the following timetable are approximate:-

9.30 a.m.	Tulich Farm
10 a.m.	Loch Melfort Hotel
10.30 a.m.	Tuckers' house
10.45 – 11 a.m.	Craobh Village Shop
11.15 – 11.25 a.m.	Kilmelford Village Hall
11.30 a.m.	Melfort Pier
11.40 a.m.	Melfort Club
12 noon	MacLeod Homes, Kilmelford
12.30 p.m.	Council houses, Kilmelford
12.45 p.m.	Kilmelford Post Office
1 p.m.	Cuilfail Hotel
1.15 p.m.	Council houses by Kilninver Primary School

## GLASGOW AND WEST OF SCOTLAND BLOOD TRANSFUSION SERVICE BLOOD DONATION SESSIONS 2008

Tel: 0845 90 90 999

### Corran Halls, Oban

Wednesday, 11 <sup>th</sup> November, 2009	16.00 – 19.30
Thursday, 12 <sup>th</sup> November, 2009	13.30 – 15.45 and 17.15 – 19.30
Wednesday, 10 <sup>th</sup> February, 2010	16.00 – 19.30
Thursday, 11 <sup>th</sup> February, 2010	13.30 – 15.45 and 17.15 – 19.30

### Community Centre, Manse Brae, Lochgilphead

Wednesday, 18 <sup>th</sup> November, 2009	14.30 – 15.45 and 17.15 – 19.30
Wednesday, 17 <sup>th</sup> February, 2010	14.30 – 15.45 and 17.15 – 19.30

## **LOCAL DIRECTORY**

A reprint of the Directory, including all the changes since October 2007, will be available in October, 2008 at £1 a copy. You can purchase the Directory at the Parish Lunch and Produce Sale or at Kilmelford Post Office. Alternatively, send your request to Cath Manchester at Eas a'mhuilinn, Kilmelford, Oban PA34 4XA **enclosing an s.a.e. and your £1 payment.**

#### **KILNINFORD NEWS EDITORIAL TEAM**

Elizabeth Asbury (Treasurer) Tel: 01852 200377  
Georgina Dalton (Distribution) Tel: 01866 844212  
Cath Manchester (Advertising) Tel: 01852 200272 (Home)  
Tel: 01852 200257 (Work)  
Fiona Wyllie (Editor) Tel: 01852 200227

Local website: [www.kilmelford.com](http://www.kilmelford.com)  
E-mail: [editor@kilmelford.com](mailto:editor@kilmelford.com)

The Kilninford News post box is on the floor in the corner under the window in the post office. Please put your adverts, letters, articles etc. in the box, or send them to the Editor, in plenty of time for the next issue in December. It would also be helpful if people advertising in the Kilninford News would make their payments when they submit their copy or make sure that they put the money in the post box or give it to Elizabeth so that she doesn't have to spend time chasing payments.

The team is very grateful to all those who kindly help with the distribution of the newsletter.

#### **ADVERTS**

Advertising rates:- Private ads £1 each  
Commercial ads £5 each per quarter page

**FOR SALE**

**QUAD BIKE TYRES (EXCAVATORS)**

2 x 24/10/11 and 2 x 24/9/11  
90% TREAD LEFT  
£35 each tyre

Tel: James Dalton 01866 844212

**WANTED**

**CHEST OF DRAWERS (in reasonable condition)**

Approximately 120cm – 160cm (W), 450cm (D), 100cm – 120cm (H)  
4ft – 5 ft (W), 1ft 6" (D), 3ft – 4 ft (H)  
With large drawers

Tel: Fiona Wyllie 01852 200227

**WANTED**

**BRICKS FROM OLD NIGHT STORAGE HEATERS  
(CREAM COLOURED)**

Will collect

Tel: Fiona Wyllie 01852 200227